

# COLOUR OPTIONS

## FABRIC CATEGORY A | CREVIN VITA

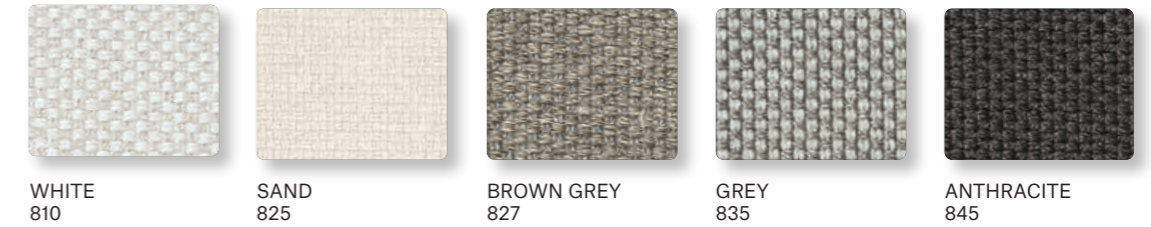


## FABRIC CATEGORY B | CREVIN BRISA

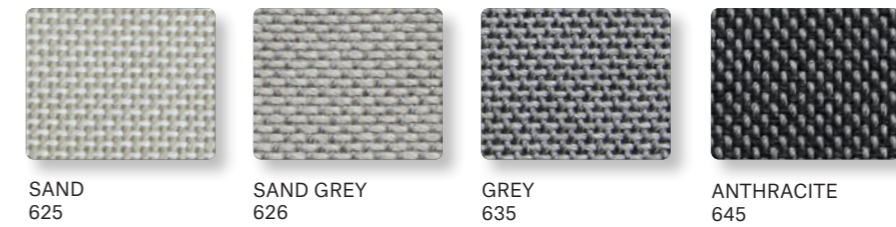


## FABRIC CATEGORY B | CREVIN BORA BORA

### TERRASADVIES



## FABRIC CATEGORY B | LIMONTA NEW HUBBLE



## FABRIC CATEGORY B | LIMONTA GUN



## FABRIC CATEGORY B | EXIT SOLAR

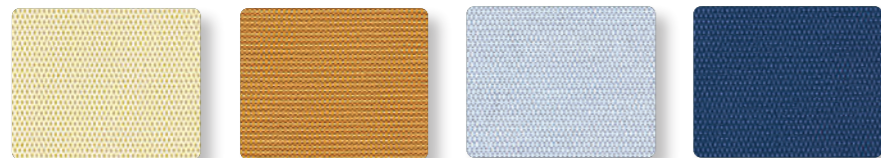




FABRIC CATEGORY C | KVADRAT PATIO



SAND 725    LIGHT GREY 735    TAUPE 717    ROSE 712    BRONZE 730



YELLOW 741    ORANGE 728    LIGHT BLUE 777    DEEP BLUE 779

FABRIC CATEGORY D | KVADRAT ATRIUM



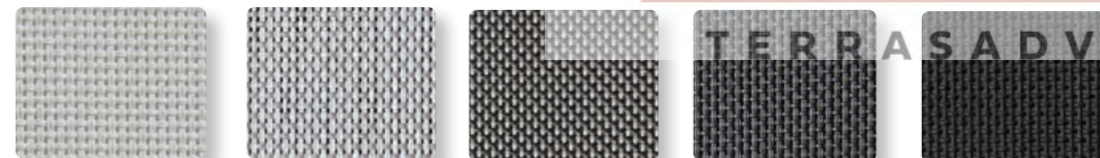
OYSTER WHITE 015    BEIGE 025    COPPER BROWN 020

FABRIC CATEGORY D | KVADRAT TERO



SAND 026    LIGHT GREY 035    ROSE 012    BRONZE 030    GREEN 080    BLUE 079

TECHNICAL FABRIC | BATYLINE



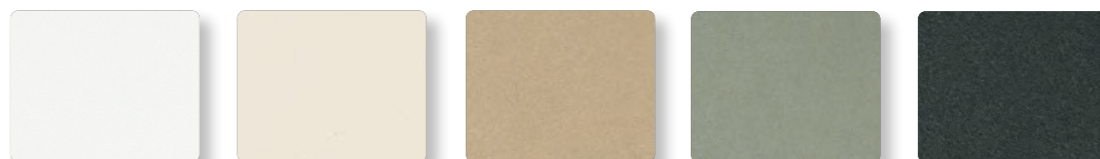
WHITE 5100    WHITE GREY 5400    GREY 5350    ANTHRACITE 5450    BLACK 5500

OUTDOOR RUGS



LIGHT GREY 35    ANTHRACITE 45

POWDER COATINGS



WHITE 110    OYSTER WHITE 115    LATTE 125    CEMENT GREEN 190    DARK GREEN 180



BROWN 135    RUST BROWN 130    COPPER BROWN 120    SALMON BEIGE 112    DARK BLUE 171



SILK GREY 104    GREY 105    ANTHRACITE 145    BLACK 150    TRAFFIC YELLOW 123

## CERAMIC



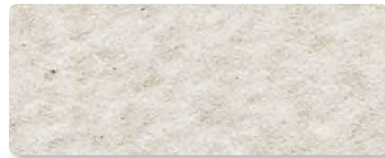
WHITE (6 mm)  
210



PEARL (6 mm)  
212



FUME (6 mm)  
214



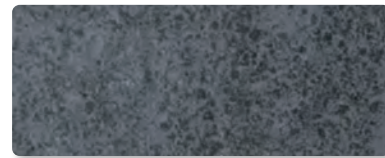
OYSTER STONE (6, 12 mm)  
209



PEARL STONE (6, 12 mm)  
213



GREY STONE (6, 12 mm)  
215



ANTHRACITE STONE (6, 12 mm)  
217



OXIDO BLACK (6, 12 mm)  
218

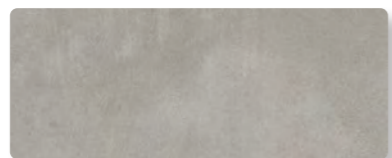


BLACK (6 mm)  
216

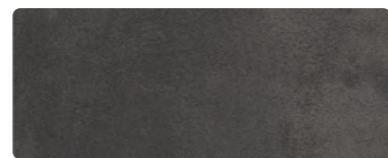
## HPL



WHITE  
310



GREY  
335



DARK GREY  
336

## PRODUCT CARE

JOS

DE GROOT

TERRASADVIES

### POWDER COATED STAINLESS STEEL OR ALUMINIUM FRAMES

Clean the frame with a solution of warm water and a mild soap. Avoid the use of abrasive cleaners. Corrective paint for small scratchings is available to order in all colours.

Corrective paint (12 ml)

REF: CRP

**47 EUR**

### BRUSHED STAINLESS STEEL FRAMES

Rinse the frame regularly with warm water. Clean with a spray for brushed stainless steel.

Spray Perfect Inox for brushed stainless steel (500ml)

REF: CL-IN

**63 EUR**

When placing the furniture in brushed stainless steel in location close to the sea shore or covered chlorinated swimming pools an extra anti-corrosion treatment is recommended. The high level of salt reduces the resistance to corrosion of stainless steel. The disregard of this recommendation voids the guarantee. An extra anti-corrosion treatment supplement is +10%. This treatment is not needed for powdercoated stainless steel or aluminium.

### CERAMIC

Ceramics has no special maintenance requirements. To clean the table top surface use warm water and a neutral detergent. For persistent stains, you may use normal household detergents, including products to eliminate grease or lime scale.

### HPL

Clean the table top surface with pure warm water or a solution of warm water and mild soap using a soft sponge or cloth. If stains cannot be removed use common household cleaners without abrasives. For persistent stains, you may use organic solvents such as acetone or alcohol. Remember to wash the surface with pure water in the end to avoid any residue of detergents.

### FABRICS

Valid for all fabrics manufacturers (Crevin, Kvadrat, Limonta, Exit Fabrics)

Use soap and water for cleaning stains. Upholstery can be machine-washed at 30° using a mild laundry detergent and a gentle cycle.

Crevin



Kvadrat



Limonta



Exit Fabrics



### OUTDOOR RUGS

Rugs can be cleaned with vacuum cleaner without brushes. For a more thorough cleaning use a solution of cold water and a mild soap. Avoid the use of abrasive brushes, bleaching agents or solvents, professional dry cleaning and high pressure washers.

### BATYLINE

Clean with warm soap water or use a special Batyline cleaner. Spray the cleaner on the surface, leave for 2 to 3 minutes, use a soft brittle brush and brush the surface repeatedly in a circular motion. Let stand for one minute and wash with plenty of water to avoid residue drying on the surface and wipe with a dry cloth.

Spray Serge Ferrari for Batyline® (500ml)

REF: CL-SF

**54 EUR**