

TEAK

We exclusively use carefully selected mature teak wood, harvested in strict accordance with our environmental policies. The renowned durability of teak is attributed to its high natural oil content, which limits moisture absorption, prevents warping, and provides exceptional stability. Additionally, teak is highly resistant to pest attacks. These qualities, combined with its striking hue and grain, contribute to teak being widely regarded as “the noblest of all wood types.”

TEAK
REF: W



OILED TEAK
REF: OT



STAINLESS STEEL

Stainless steel is celebrated for its corrosion resistance, thanks to chromium and nickel. However, in chlorine-rich environments like swimming pools or coastal areas with salt exposure, it can suffer from “pitting” corrosion. To enhance its durability, we recommend electropolishing, which further improves corrosion resistance. Electropolished stainless steel is the ideal choice for applications exposed to harsh conditions, ensuring both longevity and aesthetic appeal.

For the Ninix and O-Zon collection we recommend electropolishing treatment of the frame if it is to be used in a corrosive environment.

BRUSHED STAINLESS STEEL
REF: SS



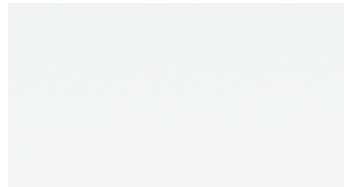
ELECTROPOLISHED STAINLESS STEEL
REF: EP



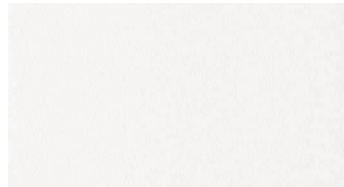
POWDER COATING COLOURS

Our powder coatings provide a premium, eco-friendly alternative to conventional paints, releasing minimal volatile organic compounds. Renowned for their outstanding durability, they resist chipping, fading, and scratching, guaranteeing a long-lasting and appealing finish.

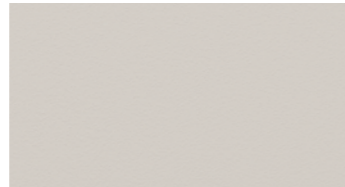
WHITE
REF: WR



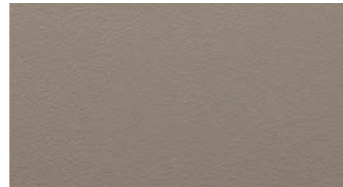
WHITE
REF: W



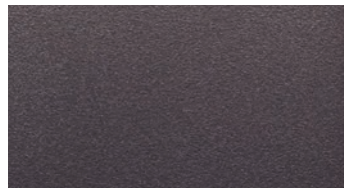
PEBBLE
REF: PB



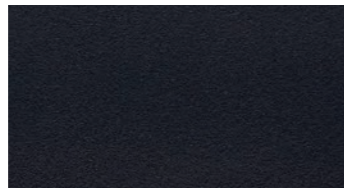
SAND
REF: S



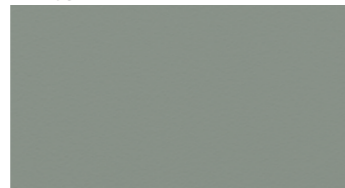
BRONZE
REF: BR



ANTHRACITE
REF: A



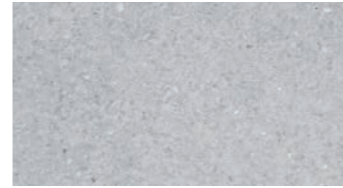
SAGE
REF: SG



CONCRETE

We use an ultra-high performance concrete reinforced by natural mineral components and organic fibers. Thanks to its discontinuous pore structure and crack-bridging fibers, it is virtually impervious. Penetration of chloride ions is also significantly reduced and thus performs exceptionally well in highly corrosive environments such as near beaches.

CEMENT GREY
REF: CG



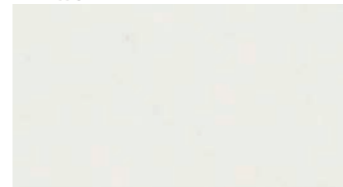
DESERT
REF: D



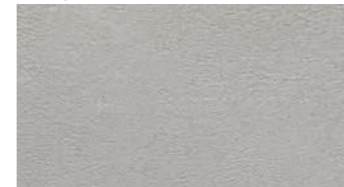
CERAMIC

The ceramic tops are made from natural clays, so small colour gradations can occur. This makes each table unique.

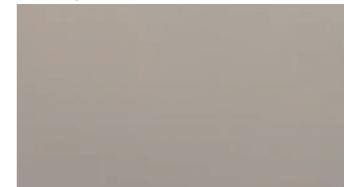
WHITE (12MM)
REF: WUM



CEMENTO LUMINOSO (12MM)
REF: CL



PEARL GREY (12MM)
REF: PG



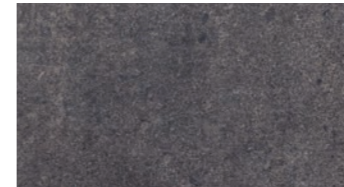
NERO MARQUINA (12MM)
REF: NM



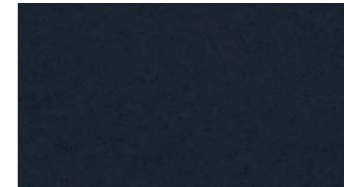
TERRA SABBIA (12MM)
REF: TS



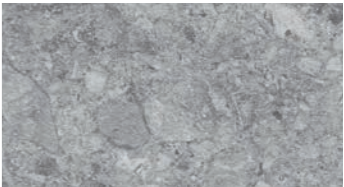
TERRA MARRONE (12MM)
REF: TM



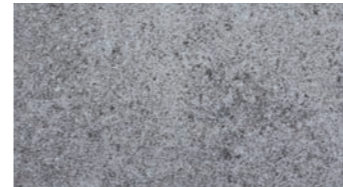
BLACK (12MM)
REF: ZUM



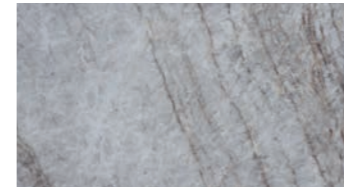
CEPPO DOLOMITICA (12MM)
REF: CD



SIENNA ARENA (20MM)
REF: SA



STRATO QUARTZ (12MM)
REF: SQ



VERDEZZA AMAZON (12MM)
REF: VA



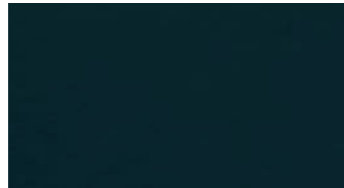
GLASS

Our glass is produced from the finest standard float glass, which is reheated in a kiln until it becomes pliable. During this process, the glass takes on a slightly wavy texture as it conforms to the surface of the kiln. Once cooled, the underside is coated with a ceramic paint, and the glass is then fired again. This process hardens the paint by fusing it into the surface and tempers the glass, increasing its durability. The slight texture in the glass surface is a natural result of the production process.

ONDULA PEBBLE
REF: OP



ONDULA VERDE
REF: OV



ONDULA BRONZO
REF: OB



ENAMELED LAVA STONES

Lava stones with a vitreous enamel coating. Fused at 850°C the enamel becomes very hard and extremely resistant to all weather conditions.

PEARL
REF: PE



MOON
REF: MO



LAVA
REF: LA



SLATE
REF: SL



JADE
REF: JA



DUSK
REF: DU



FIBER

Olefin fiber is a synthetic material derived from polypropylene. Its advantages include exceptional strength, color fastness, and comfort. Additionally, it offers excellent resistance to staining and various weather conditions.



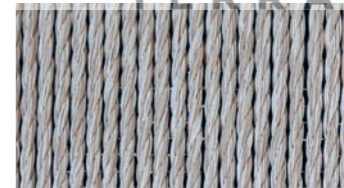
CARÉS COLLECTION (TEXTILE FIBER)
REF: ...SG - SAGE GREEN



CARÉS COLLECTION (TEXTILE FIBER)
REF: ...BK - BRICK



CARÉS COLLECTION (TEXTILE FIBER)
REF: ...D - DESERT



CARÉS COLLECTION (TEXTILE FIBER)
REF: ...BR - BRONZE



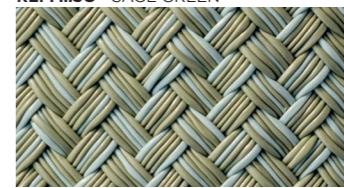
CARÉS COLLECTION (TEXTILE FIBER)
REF: ...CAU - CAPPUCCINO



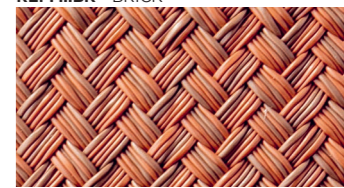
CARÉS COLLECTION (TEXTILE FIBER)
REF: ...ES - ESPRESSO



ARCHY COLLECTION (TEXTILE FIBER)
REF: ...SG - SAGE GREEN



ARCHY COLLECTION (TEXTILE FIBER)
REF: ...BK - BRICK



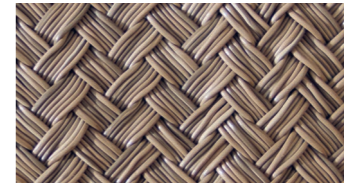
ARCHY COLLECTION (TEXTILE FIBER)
REF: ...D - DESERT



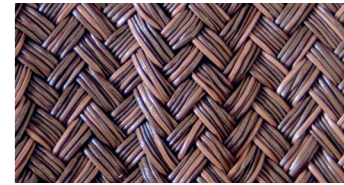
ARCHY COLLECTION (TEXTILE FIBER)
REF: ...BR - BRONZE



ARCHY COLLECTION (TEXTILE FIBER)
REF: ...CAU - CAPPUCCINO



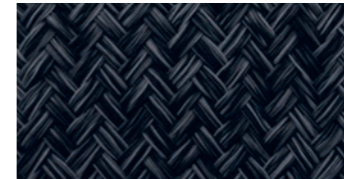
ARCHY COLLECTION (TEXTILE FIBER)
REF: ...ES - ESPRESSO



STRAPPY COLLECTION (TEXTILE FIBER)
REF: ...DT - DESERT



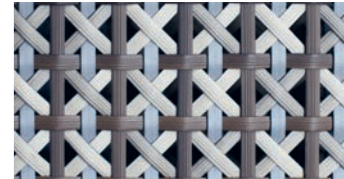
STRAPPY COLLECTION (TEXTILE FIBER)
REF: ...GRT - GRANITE



JIVE COLLECTION (OLEFIN FIBER)



CALYPSO COLLECTION (POLYETHYLENE)
REF: ...KK - KRISKROSS



RUG COLLECTION (COMPOSITE FIBER)
REF: S - SAND



RUG COLLECTION (COMPOSITE FIBER)
REF: B - BARK



RUG COLLECTION (COMPOSITE FIBER)
REF: G - GRANITE



RUG COLLECTION (COMPOSITE FIBER)
REF: O - OLIVE



RUG COLLECTION (COMPOSITE FIBER)
REF: R - ROCK

